

Computer Age Engineering - 3611 S Adams, Marion IN

Lot	DESCRIPTION
1	Metal storage cabinet
2	Metal Shelf. Items behind not included
3	Roll Around PLC HMI Test Pannel
4a	Box Of Molded Connectors Electronic Components
4b	Box Of Molded Connectors Electronic Components
4c	Box Of Molded Connectors Electronic Components
4d	Box Of Molded Connectors Electronic Components
4e	Box Of Molded Connectors Electronic Components
4f	Box Of Molded Connectors Electronic Components
4g	Box Of Molded Connectors Electronic Components
4h	Box Of Molded Connectors Electronic Components
5a	Box Of Brakers
5b	Box of Relays and Motor Starters
5c	Box Of Pilot Lights
5d	Box Of Pneumatic Components
5e	Box Of Electrical components
5f	Box Of Push Buttons
5g	Box of electrical components
5h	Box of pneumatic valves
5i	Box of pneumatic valves
5j	Box of electrical components
5k	Box of switches and electrical components
5l	Box of pneumatic Regulators and guages
5m	Box of pneumatic valves, manifolds, regulators
5n	Box of stack lights and connectors
5o	Box of lights and switches
6a	Box of electrical Components
6b	Box of electrical Connectors multi pin
6c	Box of Cables
6d	Box of electrical Connectors
6e	Box of electrical Plugs
6f	Box of used limit switches and motor starters
6g	Box of electrical Connectors
6h	Box of door safety switches
6i	Box of electronic Magnets door safety
6j	Box of electrical Connectors
6k	Box of solenoid Connectors
6l	Motor Starters and Relays
7	Servo Control and Motor
8a	Filling Cabnet. Items on top not included
8b	Filling Cabnet. Items on top not included
8c	Filling Cabnet. Items on top not included
8d	Filling Cabnet. Items on top not included
8e	Filling Cabnet. Items on top not included

8f	Filling Cabnet. Items on top not included
8g	Filling Cabnet. Items on top not included
8h	Filling Cabnet. Items on top not included
8i	Filling Cabnet. Items on top not included
9a	Lot of pneumatic regulators and filters
9b	Box of pneumatic Cylinders
9c	Box of Dump Valves
9d	Box of pneumatic Filter Regulators valves
10	480 volt motor starter and parts
11	Fryer VB-100 CNC Mill Anilam 5300m Control. As Is for parts. Mill does not run. CHUCKS PICTURED ARE NOT INCLUDED. PDF of Specs in Auction Docs
12	4 Jaw Lathe Chuck
13	6 Jaw Lathe Chuck incomplete with jaws missing
14	3 Jaw Lathe Chuck like new
15	Fryer MB-14 CNC Milling Machine. Working Condition
16	Machines Automation Plasma Table Specs Sheet in Auction Docs
17	Goebel 2000 Lbs. Overhead bridge Crane 24 ft. Span by 45 ft length. Buyer is responsible of removal.
18	Metal Storage Rack 6' contents not included
19	14' Metal Storage Rack contents not included
20	Metal Shelf With Contents Tool Steel and Bronz Gibbs
21	Metal Shelf With Contents
22	X4 sky Lift wheels and tires
23	Used 8" Wall Studs several different length but most around 22 ft.
24	10' standard Dock Bumpers
25	10' Electric Roll Up Doors
26	Electric Folding Door 12' length
27	Group Of Dock Locks
28	3 paletts of doors some with Frames
29	2 Trash Cans
30	SCE Cintrol Pannel Box
31	Allen Bradley Control Panel Box
32	Control pannel A/C unit, natural Gas Heater and hoses
33	Filling Cabnet, Electrical Pannels, Baskets, misc
34	Hydraulic Power Unit
35	Vacuum Pumps
36	Industrial Chiller Non Functioning, For Parts
37	14 Chairs
38	Pallet with 4 conveyors Food Grade
39	Hydraulic Power Unit Non Functioning For Parts
40	Pallet of Hydraulic Hose
41	Pallet of electrical Seal Tite
42	Pallet of Wire way Electrical Duct
43	Pallet of Misc. Electrical Components
44	Pallet Of Misc. Electrical wire and boxes
45	Pallet of misc. Springs
46	Lot of conduit fittings, Connectors, misc. Electrical

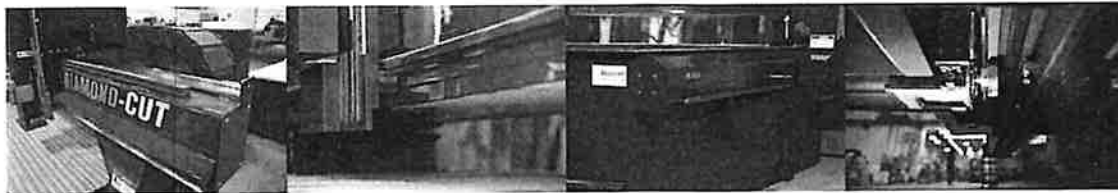
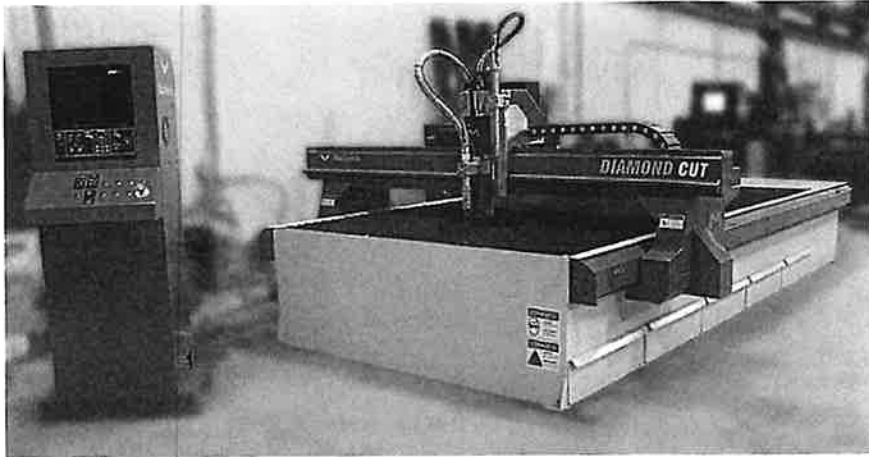
47	Pallet of Shim Stock
48	Pallet of Braker Pannels and Misc. Electrical
49	Pallet of 5 gallon buckets of paint
50	Pallet of wire wrap
51	4 boxes black and white floor tile
52	Pallet of misc. Electrical
53	Pallet of Misc. Machinest Blocks and components
54	3 piece of pvc machine plastic 8 ft.
55	John deere mower deck
56	15' x 12" steel I beam and metal
57	3'x3' safely glass
58	Outdoor flood light and transformer
59	Tote of machineable plastic and bakealite
60	2 groups of machineable plastic
61	2 groups of machineable plastic
62	2 groups of machineable plastic
63	Roof pach, misc. Hose, and ducting
64	Industrial Blower
65	Home built oak desk
66	Group Of Misc. Filters
67	Positech w-300 With trolly lifting tool
68	2 pieces of flange metal hvac duct
69	Fanuc system r-j2 robot control
70	Table Frame work bench
71	3 Uninstalled steam exchangers
72	Triplex cat Fluid pump with 3hp motor
73	Skid with industrial work shop lights
74	Spindle motor, and palet of wood, bottle jack
75	2 linear actuators without motors
76	Gas Blower, window gasket material, and a grayco auto greaser
77	Group of Cat Track
78	Group Of Gear Motors, pannel, misc. Parts
79	Meyer snow plow for a Chevy with pump and brackets. Mounted to fork extensions
80	Box of Pneumatic hose
81	Hydraulic tank
82	Group Of Misc. Cord, hose, parts
83	Heavy Duty Lifting rig
84	Transformer and roller chain
85	4 jaw Chuck, Crane hook, and other misc
86	10' x 21' paint booth with Ventilation and Rack, extra filters
87	Step Feeder with case
88	Plate stamping press with inventory, business, dies, inventory of outlet covers and switch plates, machining fixtures, equipment to make Dimond plate picture frames including matter saw, glue fixtures, corner nailer, glass cutter. Turn key business with inventory already made.
89	LVD 100 Ton Press Brake in non working condition. Has control issue. In second location
90	Storage shelf, Ben shelf, pannel board

91	GE General Purpose Drive GP-100
92	Computer Age Engineering Electrical Pannel
93	Pallet of Pneumatic Hose Guick Connect Fittings
94	Pallet of large Nuts And Bolts
95	Pallet of shoulder Bolts, air fittings, misc.
96	Pallet of misc clamps, couplers and other
97	Pallet of machinabel plastic
98	Pallet of machinabel plastic
99	Pallet of hoses and window seals
100	Lot of electrical parts
101	Barrel Cart
102	Robotic arm sign holder non working display only

Diamond Cut

1

Precision & Productivity - Designed for accurate and productive high precision cutting applications



Unitized construction, entirely made of steel, compact footprint.

Gantry:

- 6"x8" steel gantry
- Inverted linear rails with Bosch linear bearings
- Dual side drive Bosch Rexroth Digital Servo Motors
- Ultra precise helical planetary gearboxes

Rails:

- Highly accurate inverted 3/4" Agma 10 helical rack & pinions, protects against dust and material impact
- 25mm Bosch linear bearings on machined surfaces, installed on material support (unitized design)

Motors:

- Dual side drive, Bosch Rexroth A/C Servo motors with Ethercat drive controller
- Pneumatic pinion engagement with linear bearings
- Fully integrated with Bosch Rexroth AC Servo motors and Sercos III drive controller, which is the latest generation digital interface for communication between industrial controls, motion devices, and input/output devices (I/O).
- Pneumatic pinion engagement system to ensure positive rack contact

Gearboxes:

- Ultra precise helical planetary gearboxes
- Less than 3 arcminutes precision

5X10 Cutting Dimensions

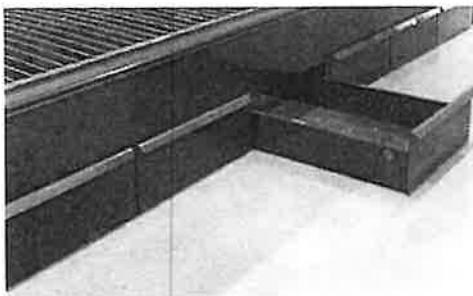
1

Specifications:	
Nominal cutting dimensions	5' 0" x 10' 0"
Maximum traverse speed	1800 IPM (480v drives)
Maximum cutting speed	0 to 500 IPM (related to process and plasma power)
Positional accuracy	0.002"
Repeatability	0.001"
Maximum table capacity	4"
Space under gantry	8.5"

5X10 Downdraft Material Support

1

Down draft system welded inside the structure, One piece frame fully welded and machined. Zoned downdraft system controlled electronically through the CNC. This system uses motor encoder feedback to open only the zone under the cutting head, can be programmed to overlap and open multiple zones at once. No mechanical bars or levers that can cause issues with binding. Dampers open with pneumatic cylinders controlled through CNC. Ducting and fan assembly to be provided by the customer. Fan and Filtration system optional, contact Machitech for information

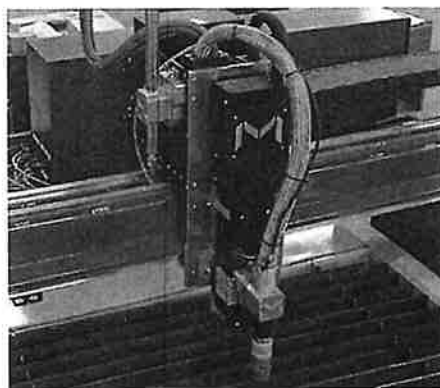


Automatic Torch Height Control

1

The Machitech automatic THC offers optimal cut quality, substantially improved productivity and reduced operating costs for plasma cutting applications.

Machitech automatic torch height control system including ball screw and 2 linear guided bearings. Corrosion free. 250 mm stroke. AC 100 W motor. Integrated laser pointer for easy part and plate alignment. A magnetic torch breakaway system is included for tip ups and collisions.



Hypertherm hpr 400XD

1


Hypertherm
**HyPerformance® Plasma
HPR400XD***

The HPR400XD delivers the ultimate in HyPerformance mild steel cutting as well as heavy-duty stainless and aluminum capability.

HyPerformance Plasma HPR400XD cuts fine-feature parts with superior quality and consistency, eliminating the cost of secondary operations.

Superior cut quality and consistency

- HyDefinition technology aligns and focuses the plasma arc for more powerful precision mild steel cutting up to 80mm (3.2")
- HDi technology delivers HyDefinition cut quality on thin stainless steel from 3 to 6 mm (12 ga to 1/4")
- Patented system technologies deliver more consistent cut quality over a longer period of time than other systems available on the market

Maximized productivity

HyPerformance plasma combines fast cutting speeds, rapid process cycling, quick changeovers and high reliability to maximize productivity

Input voltages (3-PH) and currents	VAC	Hz	Amps
	200/208	50/60	262/252
	220	50/60	238
	240	60	219
	380	50/60	158
	400	50/60	131
	440	50/60	120
	480	60	110
	500	60	88
Output voltage	300 VDC		
Output current	400 A		
Duty cycle	100% at 49°C (118°F) at 80 kW		
Power factor	0.99 @ 80 kW output		
Maximum OCV	300 VDC		
Dimensions	118 cm (46.4") H, 88 cm (34.7") W, 126 cm (49.7") L		
Weight with torch	851 kg (1877 lbs)		
Gas supply			
Plasma gas	O ₂ , N ₂ , FS*, KOS**, Ar, Ar		
Shield gas	N ₂ , O ₂ , Ar, Ar		
Gas pressure	8.3 bar (120 psi) Manual gas console 9 bar (115 psi) Automatic gas console		

Mild steel cut capacity	
Oron fire*	38 mm (1-1/2")
Production plasma	50 mm (2")
Maximum cutting capacity	80 mm (3.2")
Stainless steel cut capacity	
Production plasma	45 mm (1-3/4")
Maximum piece**	75 mm (3")
Severance	30 mm (1.2")
Aluminum cut capacity	
Production plasma	38 mm (1-1/2")
Maximum cutting capacity	80 mm (3.2")

* Feature and material types can influence oron fire performance.
 ** Maximum piece requires use of an autogas console and controlled motion process.
 See technical documentation for details.

Hypertherm
 SHAPING POSSIBILITY™

Hypertherm Edge Connect

1

**Hypertherm****EDGE[®] Connect CNC**

Shape cutting control

Designed to be flexible and easy to use, the EDGE Connect delivers reliable performance for improved profitability and application performance such as True Hole technology. Touchscreen and integrated physical buttons for easy operation. EtherCAT machine interface for easy connectivity and superior motion

What is EDGE Connect?

EDGE Connect is the next generation of Hypertherm's industry leading automated control systems. It includes Hypertherm's 45+ year cutting expertise combined with OEM customizability. Like its predecessor, EDGE Pro, it delivers reliable performance for improved profitability.

What's new with EDGE Connect? What is the CNC Software?

EDGE Connect offers new and improved hardware, EtherCAT communications and real time operating system (RTOS), new software features, and enhanced order and configuration options. While Phoenix remains the control software it is enhanced significantly with new customization and configuration tools that includes ProNest CNC, Soft Operators Console, and PLC Connect.

What are the benefits?

- Superior cutting performance delivered through Hypertherm Phoenix software and SureCut technology
- Optimized machine setup using EtherCAT communications
- Reduced costs and customization via a Soft Operators Console and PLC Connect
- Convenient operator programming with SureCut outcomes via ProNest CNC
- Improved industrial system hardware
- Simple and modular CNC ordering for point-of-use configuration design and upgrades

Why EtherCAT communications?

EtherCAT greatly simplifies the wiring of the CNC and cutting system by offering single cable connectivity between the CNC, the drive cabinet, and the HPR system.

Hypertherm
SHAPING POSSIBILITY™

Hypertherm ProNest Software

1

**Hypertherm****ProNest[®] 2017**

CAD/CAM Nesting Software

ProNest is an industry leading CAD/CAM nesting software designed for advanced mechanized cutting. It provides a single solution for all your profile cutting needs. ProNest helps fabricators and manufacturers increase material savings, boost productivity, lower operating costs, and improve part quality by offering the highest level of cutting expertise.

The Hypertherm CAD/CAM difference

Across the globe, Hypertherm products are known for quality, consistency, and reliability, and it's no different with our advanced CAD/CAM software. More leading experts, including OEMs and distributors of cutting machines, choose ProNest than any other brand. It is the only software with full support for Hypertherm SureCut technology, including True Hole, Rapid Part and True Bevel, plus easy setup, and optimized process parameters. Finally, ProNest is backed by Hypertherm's global network of professionals, meaning you'll always have access to the service and support you need.

Standard feature highlights

Part design and development

- Integrated 2D CAD program to create and edit CAD files, variable shape parts

CAD/CAM import and conversion

- Import CAD files (industry-standard file formats), import of bill of materials
- Automatic CAD file correction and error notification, spline / ellipse smoothing and reduction

Job set-up

- Material database, customer database, custom remnant creation
- Plate list, part library, grain constraint, edge piercing
- Multi-head cutting with automatic head selection and variable torch spacing

SureCut technology and built-in process expertise

- True Hole, Rapid Part, True Bevel
- Material type, thickness, grade and class-based process parameters
- Cut sequencing (automatic or manual)

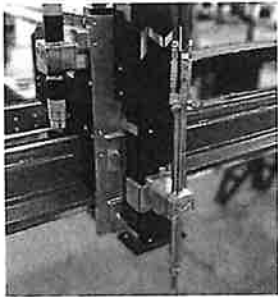
Interactive manual nesting

- Group, drag, drop, bump, move, mirror, rotate or array parts
- Animated cutting sequence animation
- Plate cropping

Hypertherm
SHAPING POSSIBILITY™

Quick Change Oxyfuel Torch

1



Oxyfuel torch including hoses, solenoid valves on magnetic quick change system. Uses the same motorized station and lifter as the plasma torch. Allows the operator to quickly switch between oxyfuel and plasma cutting.

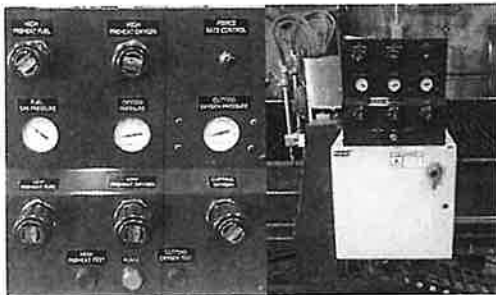
A magnetic torch holder on the side of the station keeps the unused torch out of the way of splatter and heat damage.

- External control valves for "preheat" oxygen, fuel gas and "cut" oxygen.
- Many standard torch brands available
- T-grade hoses
- Processing capacity: 12"

Advanced Oxyfuel Gas Console

1

The automated advanced gas console for oxy/fuel process includes low/high preheat gas panel with pierce rate adjustment.

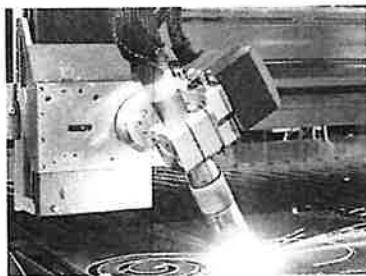


5-Axis Full Contour Beveler

1

With its compact and robust design, the 5 Axis Full Contour Bevel Head allows for cutting shapes that require bevel cutting or welding preparation.

- magnetic quick change system to ensure high quality 3 axis cutting and 5 axis bevel capabilities
- anti-collision system immediately stops the machine at the first sign of impact.
- Software upgrades to Hypertherm Cam Pronest to convert files to contour bevel toopath



- GAS

CARBON

OXY + AIR
120 PSI
2 STAGE FILTER

STAINLESS

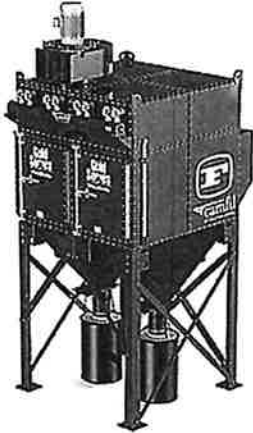
- F-5 GAS
NITROGEN
HYDROGEN
H35 < ARGON
HYDROGEN
ARGON

ARGON

MARKING

ALUM < AIR
H35 HIGH AMPS

3/4" TEXT HEIGHT -

CAMFIL DUST COLLECTOR - GS8 F55 10HP - OPTIONAL**** OPTIONAL: NOT included in TOTAL PRICE****** Installation and ductwork NOT included****** Picture NOT actual model quoted****Camfil GS8 - FARR GOLD SERIES® Dust Collector**

- Looks like a safe because it's built like a safe!
- The Gold Series utilizes Gold Cone cartridge technology to deliver clean air and long life while utilizing the smallest floor space of any dust collector available today.
- Enhanced performance features with ease of installation and service make the Gold Series the ultimate choice for cleaning the work environment of irritating dust and fumes.

Gold Cone® Filters

- Gold Cone filters have an expanded capacity due to the patented inner cone of filtration media.
- The inner cone provides uniform dispersion of back-pulsed air and opens up more useable space for airflow in the dust collector.
- Multiple filter media options and pleat spacing are available to best suit your specific application and dust.
- All Camfil APC filter media offerings deliver a minimum of 99.99% separation efficiency down to
- 0.5 micron by weight.

Housing

- Gold Series module is constructed of 7 gauge steel.
- Door, hopper, inlet and panels are all of 10 gauge steel.
- Most other dust collectors on the market are only 12 gauge or thinner.
- Hoppers have standard 10" discharges, unless otherwise specified herein.

High Entry Inlet

- Camfil APC's high cross flow inlet eliminates upward air velocities associated with traditional hopper inlets.
- Channel baffles installed in the inlet protect the filters from incoming dust and separates the larger dust particles directly into the hopper, reducing the load on the filters.

Powder Paint Finish

- Baked on, durable Dupont® powder coat (Triglycidyl Isocyanurate polyester) paint. All carbon steel components are 5-stage acid washed prior to powder coating for maximum adhesion of the paint. Unless otherwise specified, internal frames will be black.
- Painted inside and outside for weather/corrosion resistance, unless otherwise specified.

Automatic Filter Cleaning

- Filters are automatically back-flush cleaned with periodic pulses of compressed air.
- Vertical design of the Camfil APC cartridges provides more efficient pulsing of dust, thus eliminating uneven dust loading associated with horizontally mounted cartridges.
- Powerful cleaning system delivers 100% more cleaning energy than horizontal filter designs and includes: 6" compressed air header, nozzled purge pipes, diaphragms, and solenoid valves in NEMA 4 enclosure. Diaphragms are factory plumbed to the solenoids.

Filter Access

- Quick-open, access door(s) to super-fast cartridge change-out system that does not require entry into the collector.
- Cam-operated clamp bars provide easy filter clamping and sealing.
- Most competitive units use a laborious threaded handle system for door removal, in which knobs can be lost and threads can bind.

Support Leg Structure

- 54" clearance under the hopper discharge flange.
- Designed for seismic zone 3 and 100 mph wind load.

Gold Series Model:	GS8	A/C Ratio:	1.34:1
Quantity:	1	Media Area:	2600 ft ²
Reference:	Plasma Table	Application / Process:	Plasma Table
Paint Color:	Farr Green	Dust Type:	Plasma cutting - 8 hr day
Estimated Height:	194 inches	Kst Value:	Not provided by customer
Rating:	3500 CFM @ 12.0 inches SP	Operating Temperature:	Not provided by customer
Cartridges:	8		

Staggered Channel Inlet Baffle (included - 1)

- Channel baffles installed inside the inlet protect the filters from incoming dust and separates the larger dust particles, which fall directly into the hopper, reducing the load on the filters.

Spark Baffle (Included - 1)

- Box type spark baffle that bolts straight onto the existing inlet. Device is designed to be one directional and consists of a torturous path for the sparks to go thru. Inlet hole pattern of the spark baffle is the same as standard inlet design.

HemiPleat® Cartridges - eXtreme Polytech Fire Retardant (included - 16)

- This revolutionary pleat allows 100% of the filter media to remain open for dust capture and improved airflow.
- Open pleats allow for optimal pulse cleaning.
- Utilizes eXtreme Polytech Fire Retardant - White media.
- eXtreme is a proprietary upstream surface treated filter media for excellent dust release and a minimum MERV 15 efficiency.
- Nano fiber surface filtration layer delivers excellent filtration efficiencies exceeding 99.99% at 0.5 micron by weight.
- Cartridge Model No. FLTR-GS-XF-325.

Sprinkler System (Standard Clean Air System) (Included - 1)

- Factory installed internal sprinkler system includes all internal piping, terminating to an external coupling. Piping and connections to an external water supply by others.
- Per NFPA 13, the water pressure should be able to provide the design flow of 0.2 gmp/ ft² of horizontal area. A minimum recommended operating pressure of 10 psi will achieve the required flow. Make sure the water supply can handle the flow of 25 gpm per head at 10 psi.
- Check to see if local fire codes require higher pressures.

Compressed Air Regulator with Gauge (Included - 1)

- 1" NPT Filter/Regulator combination with oil filled pressure gauge and shut off valve. Owner should set pressure regulator to 90 PSI for optimum filter cleaning.

10" Drum Cover Kit(s) (included - 2)

- Drum cover, flex-hose, clamps, slide gate with integral transition (no drum). 10" diameter with positive pressure

latch system.

55 Gallon Drum(s), 35" H (included - 2)

- 55-gallon drum(s) provided. Cover(s) not included.

Farr FS 60Hz Fan - Standard Construction - FS7 - 20hp 18PLR-8.0-60-9 (Included - 1)

- External Discharge Mount Fan
- 575V, 3PH, 60Hz, C-Face, TEFC, Premium efficient motor.
- Baldor Super-E Premium efficient motor, VFD compatible, and saves energy.
- Backward inclined non overloading wheel. (except for FS1 and FS2 fans)
- Manually operated integral outlet damper.
- Note: Fan motors will typically see four to ten times the Full Load Amps during start-up. Circuits and fuses must be adjusted accordingly.

Integrated Timer Controller with Soft Start Option (included - 1)

- Type 4/12 Enclosure to contain the following components:
- Camfil Farr APC Dust Controller Pulse Timed Cleaning System with Digital Differential Pressure Meter
- Main Fusible Disconnect With J-Style Current Limiting Fuses
- Blower Soft Start Controller with Short Circuit, Overload, & Phase Protection
- Industrial Control Transformer
- Cleaning Mode Selector (Demand/Off/Continuous)
- Blower Mode Selector (Remote/Off/Manual)
- Blower Running Pilot Light
- Remote Start Connection for Remote Control of Blower
- 100' Differential Pressure Tubing Kit with Fittings
- The Camfil Farr APC Integrated Timer controller with Soft Start provides the ability to control the blower load during startup. It has all the necessary functions for a controlled start of the Camfil Farr APC Dust Collector without the high current loads typically associated with blowers during startup. The Soft Start Option also has built in features for additional motor protection such as Phase Loss/Reversal protection and Over Temperature Protection. It provides a single power connection point for the consumer as well as a convenient connection point and control of the pulse cleaning system for a total turnkey package of Dust Collection Controls. Available in all horse powers with voltages ranging from 208 thru 575 VAC it is a versatile and complete dust collector control solution.
- UL certified and labeled

Silencer (included)

- Discharge silencer for sound attenuation of fan discharge noise. It mounts directly to the fan discharge. The silencer is designed to reduce fan noise below 85dBA at 5 ft (1.52 meters). If greater sound attenuation is required consult factory. Larger units may have to be supported with hanger rods from the ceiling. If a brace is desired off of the collector consult the factory.

Silencer Support ,Bracket (included)

- Silencer support bracket is required whenever the fan silencer cannot be adequately supported on the roof of the collector or field supported.
- Most side mounted fan applications will require this option.

Smoke Detector with Fan Interlock. - TSS# 2164 (included)

- Part# 224869002

Solenoid Heaters (Included - 1)

NOTE: Installation and ductwork NOT included

Quote valid for 60 days

- Freight not included, FOB : Jonesboro AR, 72401, USA
- Delivery: Same as machine
- Terms: Same as machine

The customer assumes the responsibility for contacting their insurance underwriter and advising Camfil APC in regard to specific application requirements of explosion venting or if additional fire protection and safety equipment may be required. The buyer is also cautioned to adhere to prescribed OSHA, NFPA, Federal, State and Local codes and regulations applicable to Industrial ventilation systems, which Camfil APC equipment may be applied on. Sales tax not included.

Installation & Training (In Days)

We install the machine at your shop. The number of days written above is what we usually need for this type of machine. The training will be done by our technician to your operators. We may require customers help with rigging, placement, plumbing, welding etc. Before the installation, the customer shall execute these points:

You have the all the electric wiring , ground and power near the machine. You have all the necessary gases (including dry compressed air) and regulators with piping near the plasma. You have all the consumables for the plasma and material to cut. You have .dxf drawings before the installation. The area is cleaned, flat and free of obstructions. If you have a heated floor, advise us as soon as possible.

Pre-installation requirements:

Before scheduling onsite installation, the pre-installation documents must be completed by the customer and returned to mlabrecque@machitech.com or by Fax at (418) 268-4021. No installation will be scheduled without receipt of these documents. Technical support will forward the pre-installation documents shortly after purchase of your new machine.

Included: Cad drawings for shop layout (below used for illustration only), travelling fees (transportation, hotel, meals, etc.), installation and training. **Not Included:** Electrical connection, grounding and plumbing work.

Remote Help and Diagnostics via telephone/internet included for the life of the machine

Safety:

The customer is responsible for ensuring the safety around the equipment, limiting access to potentially hazardous areas and ensure employees use the equipment safely. Machitech Automation offers many security and safety options for your equipment, please contact us for additional details. Machitech Automation is not responsible for a customer's failure to comply with local rules and laws pertaining to equipment safety. Machitech offers optional security options like light curtains, pull cords and physical barriers (fences). Contact your Specialist for more details.

**** Cutting aluminum on a water table creates an explosion hazard, contact Machitech for further details**

* Total price doesn't include tax or shipping (except if written below)

Total Price* \$253,800.00 USD

1% 2538.-

Additional information:

OPTIONS:

- DUST COLLECTOR - GS8 Add: \$ 28,695.00

** Collector install and ductwork NOT included

** Shipping NOT included

\$ 9K
\$ 6,750.-
\$ 58,500 - 5 AXIS

4%
3 DAYS INSTALL
2 DAYS TRAINING
(1) WK TRAINING
EXCHANGE RATE

Quotation Acceptance

We agree to and accept this quotation on _____ day of _____, 201____.

PAYMENT TERMS:

50% Downpayment

40% Before delivery of equipment

10% Due upon installation

CANCELLATION POLICY:

0-15 days after receipt of purchase order = 35% of purchase order will be charge to buyer

16- 30 days after receipt of purchase order = 66% of purchase order will be charge to buyer

31- 45 days after receipt of purchase order = 100% of purchase order will be charge to buyer

The agreement of machitech automation inc. ("seller"), to supply the equipment described in seller's proposal to you ("buyer") is expressly conditioned upon the terms and conditions contained herein, including those on the back or second page hereof. Buyer's receipt and use of equipment constitutes its express acceptance of these conditions.

Delivery date is based upon receipt of down payment, purchase order AND layout approval. To expedite order processing, express deliver to street address only.

Customer Representative:

Machitech Representative:

Signature: _____

Signature: _____

Print Name: _____

Print Name: _____

Title: _____

Title: _____

*This Document must accompany your Purchase Order, and down payment CHECK REFERENCING the quotation number (cover page).

**Taxes will be charged if applicable

Machitech Terms and Conditions

1. **SALE OF EQUIPMENT.** Seller will sell to Buyer, and Buyer will purchase from Seller, the equipment described in Seller's proposal (individually and collectively referred to as the "Equipment"), subject to the terms and conditions set forth herein (this "Agreement").
2. **PRICES AND TERMS.** The Purchase Price of the Equipment shall be as set forth in Seller's proposal. In addition, Buyer will pay or reimburse Seller for the amount of any sales, use, excise or other tax now or hereinafter imposed by reason of the production, sale, transportation, delivery or installation of the Equipment. Terms of payment are as set forth in Seller's proposal and, if not set forth therein, shall be payable in full at delivery of the Equipment. Until complete payment, the equipment will remain "Seller's" property.
3. **DELIVERY.** The delivery date set forth in Seller's proposal is Seller's best estimate of when the Equipment will be delivered to carrier and will not be deemed to represent a fixed or guaranteed delivery date. Title to and risk of loss of the Equipment will pass to Buyer upon delivery to the carrier at FOB Machitech.
4. **INSTALLATION.** Installation of the Equipment by Seller is not included unless specified in Seller's proposal. If installation by Seller is included, and delays at the installation site require Seller to expend more time than is customarily allotted for installation of such Equipment, Buyer will pay Seller at Seller's rates then in effect for such additional time.
5. **WARRANTIES.** Seller warrants that it will convey good and marketable title to the Equipment sold. Seller warrants to Buyer that the Equipment or any part thereof that is manufactured by manufacturer will be free from defects in materials and workmanship for a period of three hundred and sixty five (365) days from the later of the date the Equipment is delivered hereunder or installed by Seller, if installation by Seller is included. Seller's obligation under this warranty will be limited to the repair or replacement of any Equipment or part thereof which is in breach of this warranty, provided that (i) Buyer, immediately upon discovery of the claimed defect, discontinues all use of the Equipment, and (ii) the claim of defect with respect to such Equipment or part thereof is submitted in writing to Seller no later than ten (10) days following discovery of the claimed defect and within the warranty period. Seller's liability under this warranty will not extend to any part of the Equipment which has been repaired or altered, other than by Seller, without written authorization by Seller, or has been subject to misuse or negligent handling. If any Equipment is returned to Seller in connection with a claim under this warranty and is found by Seller not to be defective or otherwise not subject to this warranty, then such Equipment will be returned to Buyer, shipping charges collect and, additionally, a service charge will be paid by Buyer to Seller to cover the cost of handling and testing such Equipment. With respect to any Equipment or part thereof not manufactured by Seller, the manufacturer's standard warranty shall apply, and Buyer shall obtain from the manufacturer in accordance therewith, the repair or replacement of any such Equipment or part thereof that may prove defective in material or workmanship. The foregoing constitutes the exclusive remedy of Buyer and sole obligation of Seller in connection with any claim by Buyer relating to any defect in materials or workmanship with respect to any Equipment or part thereof. **THERE ARE NO EXPRESS WARRANTIES BY SELLER OTHER THAN THOSE SPECIFIED IN THIS SECTION 5. NO WARRANTIES BY SELLER WILL BE IMPLIED OR OTHERWISE CREATED, WITHOUT LIMITATION, WARRANTY OF MERCHANTABILITY, NON-INFRINGEMENT AND WARRANTY OF FITNESS FOR A PARTICULAR PURPOSE.**

WARRANTY DETAILS: Shipping and travel invoiced at cost.

Machitech Automation Products: Parts, 1 year OR 2000 operation hours, whichever occurs first.

Hypertherm Plasma Products: 2 years parts, except for external parts (cables, torch lead, etc.) which have a 1 year warranty.

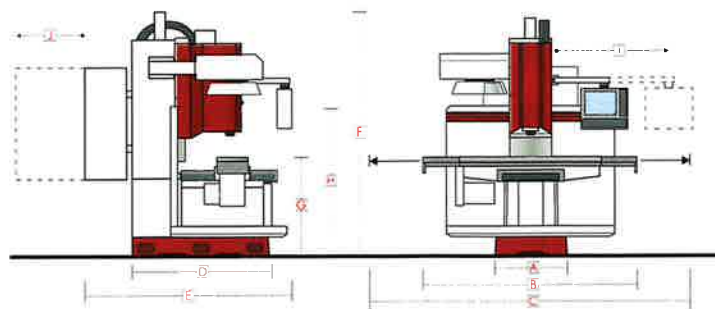
Hypertherm Automation Products: 2 years parts.

6. **LIABILITY.** Buyer assumes all responsibility for warning and protecting its employees and independent contractors with respect to all hazards to persons and property in any way connected with the Equipment and the use thereof. Seller's liability for any claim of any kind hereunder, whether or not based on contract, tort (including negligence), strict liability, warranty, or any other grounds, will not exceed the purchase price of the Equipment or the portion of the purchase price attributable to any part or parts of the Equipment in respect to which such claim is made. Seller will not be liable to Buyer for any incidental, consequential, indirect, special or exemplary damages (including, without limitation, lost profits, sales or other similar damages) arising in connection with this Agreement without regard to the nature of the claim or the underlying theory or cause of action (whether in contract, tort, strict liability, equity or any other theory of law) on which such damages are based. Without limiting the generality of the foregoing, Seller will have no liability with respect to the results obtained by use of the Equipment, whether in terms of product condition, operating cost, general effectiveness, success or failure, or regardless of any statement made in any written proposal submitted by Seller. It is expressly understood that any technical advice furnished by Seller with respect to the Equipment is given gratis and Seller assumes no obligation or liability for the advice given or results obtained, all such advice being given and accepted at Buyer's risk. Each party hereby indemnifies and holds harmless the other party from and against

any and all costs, fees (including reasonable legal fees and expenses), damages liabilities and claims arising from the injury, illness or death of the indemnifying party's employees in any way related to the Equipment, whether or not such injury, illness, or death is claimed to have been caused by, resulted from, or was in any way connected with the negligence of the party to be indemnified. Buyer hereby waives any right of subrogation that Buyer, any insurer of Buyer or any third party making a claim through Buyer, may have under this Agreement. Buyer hereby indemnifies and holds harmless Seller from and against any and all costs, fees (including reasonable legal fees and expenses), damages, liabilities and claims arising from any and all sales and use taxes due in connection with the sale, ownership, use or transfer of the Equipment and personal property taxes relating to the Equipment that arise or accrue from and after the date hereof.

7. **CONTINGENCIES.** Seller will not be liable for default or delay in the performance of any of its obligations hereunder due to act of God, accident, fire, flood, storm, riot, war, act of terrorism, sabotage, explosion, strike, concerted acts of workers, national defense requirements, governmental law, ordinance, rule or regulation, whether valid or invalid, extraordinary equipment failure, inability to obtain electricity or other type of energy, raw or finished material from normal sources of supply, labor, equipment or transportation, or any similar or different contingency beyond its reasonable control which would make performance commercially impracticable whether or not the contingency is of the same class as those enumerated above, it being expressly agreed that such enumeration is non-exclusive; provided, however, that neither business downturn nor economic conditions will qualify as a contingency within the meaning of this Section 7.
8. **PROPRIETARY INFORMATION.** Buyer will maintain all proprietary and confidential information disclosed by Seller, including such information obtainable upon examination of the Equipment, in strict confidence and will refrain from any disclosure thereof to any third party (including any affiliate of Buyer), for any purpose, without the prior written consent of Seller. Buyer will use said information solely for purposes of maintaining and operating the Equipment, and will refrain from any use of the Equipment to design, construct, and/or operate any duplication or modification of the Equipment, or from any other use thereof, without the prior written consent of Seller. Any software, as defined below, information, logos, trademarks or trade dress and other written materials provided under this Agreement are covered under the copyright, trademark, trade secret and related intellectual property laws of many countries. Such intellectual property rights remain the exclusive property of Seller.
9. **SOFTWARE.** To the extent necessary to use the Equipment, Seller hereby grants to Buyer a non-transferable, non-exclusive license to use in accordance with the terms of this Agreement any software furnished by Seller with the Equipment. The term "software" will mean all the program codes, any subsequent corrections, new release modifications and updates and associated documentation and manuals. Buyer acknowledges that any software so furnished by Seller is the property of Seller and Buyer will not remove any identification, trademarks or notices of any proprietary restrictions from such software. The techniques, algorithms, and processes contained in the software constitute valuable trade secrets and/or proprietary information of Seller and will be used by Buyer only for Buyer's own internal needs. Such software will not be sold, sublicensed, marketed, leased or in any way conveyed to a third party without Seller's prior written authorization. Buyer will not use such software to do consulting for other parties. Buyer will be given one copy of such software and will not have the right to copy or modify such software in any way.
10. **EXPORT.** If Buyer exports any Equipment outside of the country in which the Equipment is delivered to Buyer, Buyer assumes responsibility for complying with applicable laws and regulations and for obtaining required authorizations.
11. **MISCELLANEOUS.** This Agreement supersedes any prior agreement or agreements between Buyer and Seller relating to the sale of the Equipment. The entire agreement is contained herein. There are no other promises, representations or warranties with respect to the Equipment and any other or different terms or conditions in any purchase orders, or other documents issued or accepted hereunder will be deemed null and void. No modification or waiver of this Agreement will bind either party unless expressly set forth in writing and manually signed and accepted by an authorized representative of the party sought to be bound by such writing. A waiver of any of the terms and conditions hereof will not be deemed a continuing waiver, but will apply solely to the instance to which the waiver is directed. Any headings contained in this Agreement are used only as a matter of convenience and reference, and are in no way intended to define, limit, expand or describe the scope of this Agreement. Terms used herein without definition are used as defined in Seller's proposal. Any rule of construction to the effect that ambiguities are to be resolved against the drafting party will not be applied in the construction or interpretation of this Agreement. Any assignment of this Agreement by either party without the prior written consent of the other party will be void. This Agreement will be governed by the laws of the Province of Ontario and laws of Canada applicable herein, without regards to principles of conflicts of laws. Buyer and Seller hereby waive to the fullest extent permitted by law any right to a trial by jury in any action or proceeding based upon, arising out of, or in any way relating to this Agreement.

MB-R SERIES SPECIFICATIONS		MB-10R	MB-14R	MB-16R
MACHINE CAPACITY	X Travel	32"	40"	60"
	Y Travel	17"	20"	25"
	Z Travel	19"	20"	24"
	Table Load (Evenly Distributed)	2,000 lbs.	2,450 lbs.	2,950 lbs.
	Ballscrew Size	1.26"	1.26"	1.57"
	Table Size	14" x 50"	16" x 54"	18" x 70"
	T-Slots (No./Width)	3 / 0.630"	3 / 0.630"	5 / 0.630"
SPINDLE	Table Top to Floor	31"	33"	36"
	Motor (Peak)	12 HP	12 HP	12 HP
	Max Spindle Torque		40 ft/lbs	
	Spindle Speeds (RPM)		60 - 8,000 RPM	
	Tool Type/Taper		CAT 40 (BT-40 Optional)	
	Spindle Nose to Table (Max - Min)	25.75" - 6.75"	25" - 5"	28" - 4"
	Spindle Center to Column	17.5"	20"	25"
ATC	Tool Storage Capacity		12 (20 optional)	
	Tool Change Time		7 Seconds	
	Tool Selection		Bi-Directional	
	Max. Adjacent Tool Diameter		5.5"	
	Max. Tool Weight		15.4 LBS	
	Max. Tool Length		11.8"	
PERFORMANCE	Positioning Accuracy		+/- 0.0002"	
	Positioning Repeatability		+/- 0.0001"	
	Rapid Traverse		400 IPM	
	Cutting Feed Rate		0.001 - 300 IPM	
	Axis Thrust (Peak)		4,400 lbs.	
GENERAL INFO	Air Pressure Requirements		85 PSI; 3 CFM	
	Coolant Capacity		12 Gallons	
	Coolant Flow		3 Gal/Min	
	Power Requirements	35 AMP 208-250 VAC 3 Phase (380-500 VAC)	40 AMP (220 VAC ONLY)	
	Shipping Dimensions* (WxDxH)	50" x 76" x 76"	54" x 80" x 78"	72" x 92" x 89"
	Operating Dimensions (WxDxH)	103" x 80" x 94"	113" x 80" x 106"	174" x 92" x 113"
	Machine Weight	5,000 lbs.	7,000 lbs.	10,000 lbs.



	MB-10R	MB-14R	MB-16R
Floor Width (A)	26"	26"	33"
Overall Width (B)	72"	82"	111"
X-Axis Movement (C)	103"	113"	174"
Floor Depth (D)	51"	56.5"	68"
Overall Depth (E)	80"	80"	92"
Maximum Height (F)	94"	106"	113"
Floor to Table Height (G)	31"	33"	36"
Floor to Console Height (H)	62"	62"	62"
Console Swing Radius (I)	63"	41"	72"
Electrical Cabinet Swing (J)	37"	36"	37"
Approx. Machine Weight	5,000 lbs.	7,000 lbs.	10,000 lbs.

* Requires some disassembly to meet these minimum dimensions. Contact factory for more information.

© 2024 Fryer Machine Systems, Inc. rev 122123
Specifications subject to change without prior notice.



Huntington Office
519 N. Jefferson St.
Huntington, IN 46750
260.356.3911

Fort Wayne Office
3344 Mallard Cove Ln.
Fort Wayne, IN 46814
260.459.3911

Marion Office
765.671.1190
Toll Free 800.356.3911

Computer Age Engineering Inc. – 3611 S. Adams, Marion, IN 46952

ONLINE PERSONAL PROPERTY AUCTION TERMS

BIDDING PROCEDURE BUYERS ARE TO FOLLOW WITH NO WAIVER

Thank you for participating in Ness Bros Online Auctions. It is important that you familiarize yourself with the terms and conditions as all sales are final and irrevocable. The terms of sale are non-negotiable. Good luck and good bidding!

- BIDDERS PACKET:** All bidders who have registered for the online auction can view copies of the terms at www.nessbros.com on the specific property Auction Detail Page.
- ONLINE REGISTRATION:** Registration for this auction (online) finalizes each bidder's agreement to the terms and conditions of sale which are incorporated by reference into your bidding. Do not bid until you have read the terms and conditions. In order to bid on the Personal Property, all bidders must be signed in through www.BidNessBros.com. There is no fee to register, but a valid credit card will be required to verify identity. By bidding you are representing to Ness Bros. Realtors & Auctioneers ("Ness Bros."), and the Seller that you have read and agree to be bound by the terms and conditions for this sale as stated herein. If you do not agree with any of the terms and conditions stated, **DO NOT BID** or you will be bound by those terms and conditions.
- CONDUCT OF THE AUCTION:** The Seller and selling agents reserve the right to preclude any person from bidding if there is any question as to the person's identity, credentials, validity of the credit card, fitness to bid, financial ability to buy, etc. All decisions of the Auctioneer are final. **THE SALE WILL BE CONTROLLED BY THE BIDSPOTTER SOFTWARE.** Ness Bros is not responsible for malfunctions or system errors which cause a bid or bidder to fail to be recognized or registered. If there is a dispute, the Auctioneer may re-open the bidding at the Auctioneer's sole discretion and shall serve as the sole arbiter as to who is or is not allowed to bid. Seller reserves the right to cancel or withdraw any personal property item at any time and approve all final bids.
- BIDDING:** Bidding starts at the nominal Opening Bid(s) indicated and is open to all who registered and are approved by the way of verified identity and credit card information. The bidding will be open for minimum of 7 days. The auction ends at a predetermined time with an Overtime Period if necessary, which is defined as follows: if a bid is placed within ten (10) seconds of the close of bidding, then another two (2) minute period commences from the time of the last bid until no bids are placed within the next two (2) minutes. The last bid shall be made final. The Bidder is responsible for knowing which item he is bidding on. Auctioneer cannot honor "mistakes".
- AGENCY DISCLOSURE & GENERAL OFFICE POLICIES:** Ness Bros. represents the Sellers only and does not inspect merchandise on bidder's behalf.
- DISCLAIMER & ABSENCE OF WARRANTIES:** All items are sold "AS IS, WHERE IS" basis. No warranty or representation, either expressed or implied, concerning the Personal Property, its condition, or the condition of any other components on the Personal Property, is made by the Seller or Ness Bros. The information contained online or in the Brochure is subject to verification by all parties relying on it. No liability for its accuracy, errors, or omissions is assumed by the Seller or Ness Bros. Each potential bidder is responsible for conducting his or her own independent inspections, investigations, inquiries, and due diligence concerning the personal property.

- **TERMS:** A Buyer's Premium of 15% will be added to the high bid and included in the total purchase price. If purchases, which include the buyer's premium are over \$5,000 those funds must be wired to Ness Bros. (wiring instructions are provided in the winning bidders email or you may call the office at 260.356.3911. When wiring funds \$15.00 must be added to the total to cover the bank's fees,. Be sure to include both your name and bidders paddle # in the wiring instructions.) All Final Purchases will be Processed with Credit Card Provided during registration. **All bids accepted on the Personal Property are subject to the Sellers approval.**
- **EXECUTION OF WINNING BID:** Within 24 Hrs Immediately following the close of the auction, the Buyer will be contacted by the Auction Company via email to confirm contact information and (shipping address and/or personal pick up) for items won at Auction.
- **POSSESSION/REMOVAL:** **Pickup in person of items will be @ 3611 s. Adams, Marion, IN 46952 on Friday, June 13 during SCHEDULED TIMES between 4:00 – 6:00 pm. A LINK TO THE CALENDLY SCHEDULE WILL BE SENT VIA EMAL AFTER YOUR INVOICE IS PROCESSED AND YOU WILL CHOOSE YOUR INDIVIDUAL TIMES SLOT.** Do not move merchandise without auction personnel present to check you out. Buyers are responsible for all risk of loss, property damage, personal injury caused by removal, and all costs of removal of items/lots purchased. Buyers are responsible for capping any electrical, plumbing, or gas lines that are disconnected from removing their items. Buyer is responsible for repairing any damage or void created in the building from the removal of their items. Moving & loading services contracted with any transport company, rigging company or moving company are independent of the Auctioneer, and Auctioneer shall be held harmless from any claims arising between the buyer and said company. If the winning bidder cannot pick-up the items on the above allotted date and time, there will be a Minimum \$45 fee charged for a Ness Bros Auction Crew Member to meet the winning bidder on a different date and time, based solely on the Sellers schedule and circumstances.
- **HEAVY EQUIPMENT REMOVAL:** Buyer will be contacted to schedule a special pickup date outside of the normal Friday Pickup to remove the heavy equipment. Buyers are responsible for repairing any damage or void created in the building from the removal of their items. Moving & loading services contracted with any transport company, rigging company or moving company are independent of the Auctioneer, and Auctioneer shall be held harmless from any claims arising between the buyer and said company.
- **PACKING & SHIPPING:** **The buyer is responsible for the shipment of all purchased property; most items cannot be shipped.** The Auction Company will not be providing shipping options.
- **MISSING / LOST:** The auction company and sellers are not liable for lost or stolen items purchased at the sale. However, a refund shall be given in the amount of the final bid price if the personal property item is cataloged as a single lot item. If the personal property is in a grouped lot with multiple items, the auctioneer will determine a commensurate amount based upon the missing item for refund.
- **DEFAULT:** If the winning bidder refuses or fails to complete the transaction for ANY reason (including, but not limited to, remitting the total purchase amount, or arranging pickup of the item), Buyer shall relinquish ANY right to complete the transaction and shall have no rights or interest in the property. Any property forfeited by the buyer may be resold, and any cost of removal, deficiency or loss may be charged to the buyer for liquidated damages to Seller. PLEASE BE ADVISED: Various state statutes give Seller the right to pursue legal action against bidders who refuse to complete transactions. This may include (but is not limited to) suit to compel completion of the sale, and/or criminal charges of fraud or other intentional act.
- **AUCTIONEER RESERVES:** Auctioneer Reserves the right to make changes to an auction, to split or combine lots, cancel, suspend or extend the auction event.
- **DISPUTES:** If any dispute arises concerning any part of the online auction process, payment of items , quality, quantity of merchandise being sold or if an item has been paid for by an buyer and then the item is no longer available for buyer to obtain. The auctioneer has final say so on resolving said dispute and auctioneer may elect to refund to the buyer their total funds used to purchase said items as resolving the dispute. If the auctioneer elects to

refund buyer their money, buyer herein agrees that this will terminate all said buyer's rights to any future claims against Ness Bros and the seller concerning this matter.

YOU ARE ENTERING INTO A BINDING CONTRACT. THERE ARE NO REFUNDS OR BID CANCELLATIONS. THE REGISTERED BIDDER IS PERSONALLY RESPONSIBLE, LEGALLY AND FINANCIALLY FOR ALL AUCTION ITEMS BID UPON WHETHER REPRESENTING ONE'S SELF OR ACTING AS AN AGENT. AN ONLINE BID ACCEPTED AT PUBLIC AUCTION IS A LEGAL AND BINDING CONTRACT TO PURCHASE. ANY BIDDER WHO FAILS TO CONSUMMATE A PURCHASE WILL BE BANNED FROM BIDDING AT ALL FUTURE SELLER AUCTION EVENTS AND MAY BE PURSUED FOR CIVIL AND/OR CRIMINAL VIOLATIONS.

STATEMENTS MADE BY THE AUCTIONEER WILL TAKE PRECEDENCE OVER PREVIOUS PRINTED MATERIALS OR ANY PREVIOUS ORAL STATEMENTS