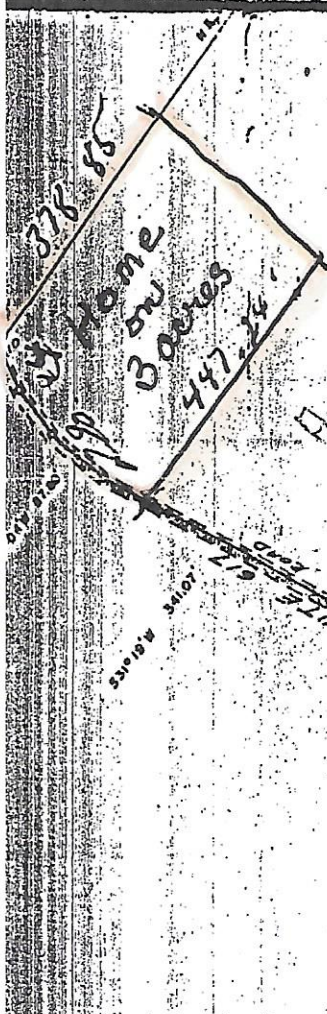


NOTE: TRAVERSE IS ALONG
EDGE OF ROAD, AS
ALONG E.

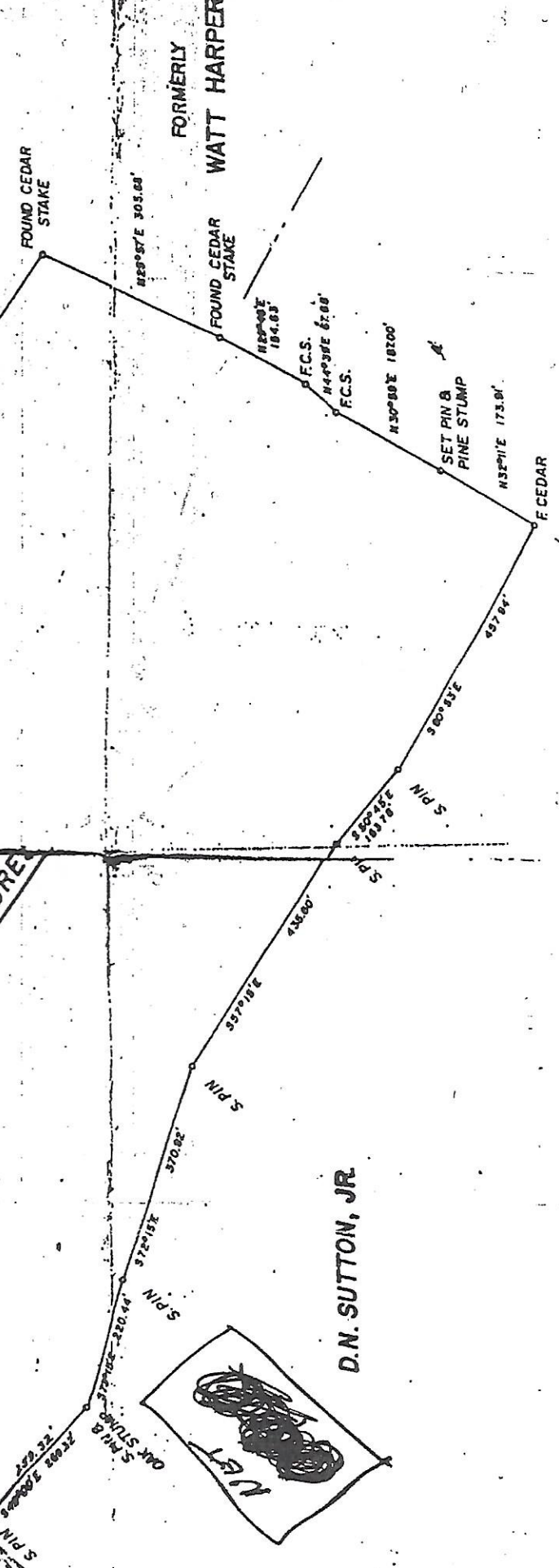
ROBERT E. HARPER
CAROLYN B. HARPER



~~40.52~~ ACRES

TO CROUCH

TO CUMMINS



PLAT OF SURVEY
A PARCEL CONTAINING 40.52 ACRES
BEING THE
AMANDA BAGBY, EST.

CHESAPEAKE CORP. OF VIRGINIA

