

BRADLEY'S AUCTION

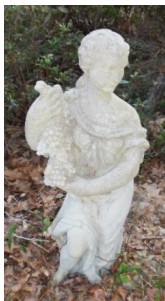
ESTATE AUCTION

6108 CAMDEN RD. • FAYETTEVILLE, NC 28306

The late Mr. Daniel T. Fisher & Mrs. Linda K. Fisher "deceased"

DIRECTIONS: FROM I-95 TURN ONTO EXIT 56 TOWARDS FAYETTEVILLE/FORT BRAGG, GO APPROX. 8 3/4 MI., TURN RIGHT ONTO OWEN DR. GO APPROX. 3/4 MI. TURN LEFT ONTO CAMDEN RD. GO APPROX. 5 1/4 MI. AND SALE SITE WILL BE ON YOUR RIGHT. WATCH FOR AUCTIONS SIGNS

SATURDAY, MARCH 25TH - 10:00 AM



SMITH & WESTERN MD 59
9MM SEMI AUTO PISTOL
GALESI-BRESCIA 635 CAL.
SEMI AUTO PISTOL
SMITH WESTERN
.38 CAL. REVOLVER
MARLIN MD 70P BREAKDOWN
22LR SEMI AUTO RIFLE
BM NITRO PROVED BRITISH
303 CAL. BOLT ACTION RIFLE
SKS 7.62 MADE IN CHINA
SPRINGFIELD MD 67 SERIES B
12 GA. PUMP SHOTGUN
E. ALLEN CO MAKERS
RABBIT EAR DOUBLE BARREL
SHOTGUN BLACK POWDER
J. STEVENS LITTLE SCOUT
22 RIFLE 14 1/2
ULTRA HI .45 CAL.
BLACK POWDER RIFLE

JUKAR BLACK POWDER RIFLE
EIG NAVY BLACK POWDER
REVOLVER PISTOL
RICHARD ARMS BLACK
POWDER REVOLVER PISTOL
JUKAR SPAIN .45CAL
BLACK POWDER PISTOL
A.S.M. BLACK POWDER
REVOLVER PISTOL
CAP PISTOLS W/HOLSTER
PATIO SET
PUSH MOWER
YARD CART
MTD RIDING MOWER
GENERATOR
MULCHER
ASSORTED LONG
HANDLE TOOLS
OLD TIMEY
CHURCH PEW

SINGLE AXLE
"NOMAD" CAMPER
PRIMITIVE WARDROBE
SKIL 10" BAND SAW
CRAFTSMAN CHOP SAW
COMMERCIAL GRADE
TABLE SAW
BENCH GRINDER
ASSORTED HAND TOOLS
OLD WHEAT SICKLE
ROUTER & TABLE
COLEMAN LANTERN
METAL DETECTOR
ELECTRIC CHAIN SAW
PENN ROD & REEL
HAND CART
2 VINTAGE YARD CHAIRS
PICNIC TABLE
2 YARD BENCHES
SEVERAL CONCRETE PCS



CONDUCTED
BY



AUCTIONEER:

WM. THOMAS BRADLEY

NCAL: 5443 SCAL: 4521

P.O. BOX 983 - SALEMBOURG NC 28385

919-201-7530

E MAIL: GUARDMUT@AOL.COM

VISIT OUR WEBSITE AT:

WWWBRADLEYSAUCTIONS.COM

ESTATE AUCTION
6108 CAMDEN RD. • FAYETTEVILLE, NC 28306

SATURDAY MARCH 25TH - 10:00 AM



10% BUYERS B/F WILL APPLY - CONCESSIONS WILL BE AVAILABLE

P.O. BOX 983 - SALEMBOURG NC 28385 • 919-201-7530

E MAIL: GUARDMUT@AOL.COM • VISIT OUR WEBSITE AT:

WWW.BRADLESAUCTIONS.COM

Terms of Sale: We accept Visa, MasterCard, Discover, American Express, Cash or Approved Check. ANNOUNCEMENTS DAY OF SALE TAKE PRECEDENCE OVER ANY PRINTED MATERIAL Terms and Conditions: Cash, Travelers Checks or Good Checks if known to us, otherwise letter of credit from bank. Positive identification required. All items sold as is with any announcement made the day of sale taking PRECEDENCE over any printed material. NOT RESPONSIBLE FOR THEFT OR ACCIDENTS. Auctioneer is not responsible for accuracy of any description or condition of any item sold.



CHAIN SAW
 WEED EATER & BLOWER
 2 LADDERS
 KILN
 ASSORTMENT OF MOLDS
 1960'S DRESSER
 STEP LADDER
 PRESSURE COOKER
 WHEEL CHAIR
 WOODEN TATER BOX
 WHAT NOTS
 OF ALL KINDS
 CHEST TYPE FREEZER
 ASSORTMENT OF
 BABY DOLLS
 TEA SPOON COLLECTION
 ROCKING CHAIR
 SMALL BUTCHER BLOCK
 ASSORTMENT OF FLATWARE
 SEVERAL STONE BOWLS

SEVERAL STONE PITCHERS
 OLD WOODEN
 DOUGH BOWL
 ANTIQUE BUTTER CHURN
 STARBURST PATTERN
 GLASSWARE
 ANTIQUE BABY HIGH CHAIR
 OLD TIMEY BUTTER CHURN
 MINIATURE TEA SET
 ASSORTED CUSTOM JEWELRY
 WATT BOWL WITH LID
 DINETTE TABLE & 6 CHAIRS
 WOOD TRUNK
 SOFA & CHAIR
 RECLINER
 ASSORTMENT OF PICTURES
 ANTIQUE CHAIN CABINET
 ANTIQUE BABY DOLL TRUNK
 WROUGHT IRON POLE LAMP
 WHAT NOT SHELF

SEVERAL OLD POCKET WATCHES
 SMALL GUN SAFE
 ASSORTMENT OF
 CHRISTMAS ITEMS
 ANTIQUE OAK CHEST OF DRAWERS
 ANTIQUE OAK DRESSER
 OLD PINE BENCH
 1930'S METAL BED
 SINGER QUANTUM
 SEWING MACHINE
 WHITE SPEEDY LOCK
 SEWING MACHINE
 ANTIQUE OAK BIBLE TABLE
 CONNECTION OF BARBIE DOLLS
 ACTIVE 1355 BERNINA
 SEWING MACHINE
 ASSORTMENT OF
 POTS & PANS

**ALL LOCAL, STATE AND FEDERAL
 FIREARM LAWS APPLY**

