

BRADLEY'S AUCTION

PUBLIC AUCTION 1492 N. ONEIL ST. ▸ CLAYTON, NC 27520

FOR ????????

DIRECTIONS: FROM MAIN ST "CLAYTON" TURN RIGHT ONTO N. ONEIL ST GO APPROX. 1 5/10 MILES TURN ONTO PATH TO SALE SITE. WATCH FOR AUCTION SIGNS!

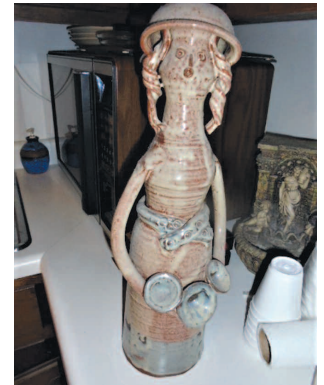
SATURDAY, JUNE 24TH • 10:00 AM



ITEMS TO INCLUDE:
SNOOPY COLLECTION
LARGE COLLECTION OF THE
HERITAGE VILLAGE COLLECTION
WALTERS TRAIN SET
LOTS OF CHRISTMAS ITEMS
ANTIQUE DROP FRONT MAHOGANY
SECRETARY "BALL & CLAW"
2 QUEEN ANNE LADIES CHAIRS
MODERN SOFA
COFFEE TABLE
END TABLE "DROP LEAF"
FLAT SCREEN TV
ANTIQUE LADIES CHAIR
SEVERAL BRASS LAMPS
SEVERAL COLLECTOR PLATERS
"TO INCLUDE EDNA HIBEL MADE

IN N. GERMANY "ROSENTHAL
GROUP "GERMANY"
SEVERAL PCS OF CHINA
"COACHING SCENES BY
JOHNSON BROS.
NUMEROUS PCS. OF DALTON POTTERY
3 OLD TIMEY COFFEE POTS
KITCHEN AID MIXER
MR. COFFEE MAKER
ASSORTED POTS & PANS
BALL & CLAW DINETTE TABLE
WITH 8 CHIPPENDALE CHAIRS
MAHOGANY CHINA CABINET
EMERSON MICROWAVE
ROPER WASHING MACHINE
WHIRLPOOL DRYER
CITATION CHEST FREEZER

ANTIQUE PINE TABLE
MAPLE DRESSER
FULL SIZE BED
ANTIQUE BOTTOM CHURN
OIL ON CANVAS
MUSICAL INSTRUMENT
PINE DISPLAY CABINET
ELECTRIC FIRE PLACE
PAINTED 2-MAN CROSS CUT SAW
SEVERAL FLOWER ARRANGEMENTS
WALL MIRROR
MAHOGANY CHEST OF DRAWERS
MAHOGANY POSTER BED
MAHOGANY DROP LEAF HALL TABLE
BABY DOLLS
TABLE TOP RADIO
RAINBOW VACUUM CLEANER



CONDUCTED
BY



AUCTIONEER:
WM. THOMAS BRADLEY
NCAL: 5443, SCAL: 4521, VAL: 2907004408

P.O. BOX 983 - SALEMURG, NC 28385

919-201-7530

E-MAIL: GUARDMUT@AOL.COM

VISIT OUR WEBSITE AT:
WWW.BRADLEYSAUCTIONS.COM

PUBLIC AUCTION
1492 N. ONEIL ST. › CLAYTON, NC 27520



SATURDAY, JUNE 24TH • 10:00 AM



AUCTIONEER:
WM. THOMAS BRADLEY
 NCAL: 5443, SCAL: 4521, VAL: 2907004408

10% BUYERS B/F WILL APPLY - CONCESSIONS WILL BE AVAILABLE

P.O. BOX 983 - SALEMURG, NC 28385 - 919-201-7530

E-MAIL: GUARDMUT@AOL.COM - VISIT OUR WEBSITE AT:

WWW.BRADLESAUCTIONS.COM

Terms of Sale: We accept Visa, MasterCard, Discover, American Express, Cash or Approved Check. **ANNOUNCEMENTS DAY OF SALE TAKE PRECEDENCE OVER ANY PRINTED MATERIAL.** Terms and Conditions: Cash, Travelers Checks or Good Checks if known to us, otherwise letter of credit from bank. Positive identification required. All items sold as is with any announcement made the day of sale taking **PRECEDENCE** over any printed material. **NOT RESPONSIBLE FOR THEFT OR ACCIDENTS.** Auctioneer is not responsible for accuracy of any description or condition of any item sold.



1930's CHEST OF DRAWER
 ANTIQUE STYLE BABY STROLLER
 LOTS OF NEW ITEMS
 UNOPENED
 MARBLE TOP PLANT STAND
 4 PORCH ROCKER
 2 PORCH SWINGS
 ASSORTMENT OF COSTUME
 JEWELRY
 MAHOGANY POSTER BED

ASSORTED LONG HANDLE
 TOOLS
 SEVERAL USED CABINETS
 HAND CART
 HOT DOG WARMER
 5000 WATT GENERATOR
 SEVERAL LADDER BACK CHAIRS
 NEW ELECTRIC POWER WASHER
 1950'S RED & WHITE TABLE
 SEVERAL FOLDING CHAIRS

