

Inventory Reduction Auction

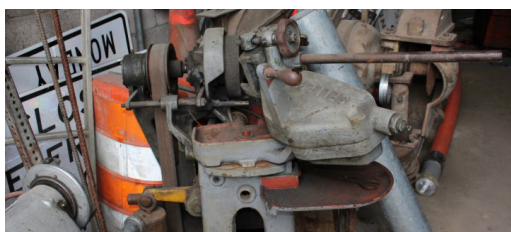
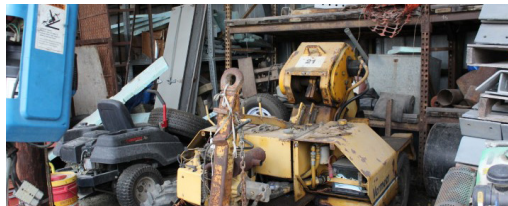
BY "KING ELECTRIC"

135 SOUTH RACEPATH RD FAYETTEVILLE NC 28301

Directions: From Clinton Merge onto NC-24 East go approx. 1 2/10 miles turn Right onto South East Blvd/US 701 Business South go approx. 8/10 miles turn Left onto Rowan Rd go approx. 1 2/10 miles and the sale site will be on your Right ... Watch for Signs! .

TUESDAY DEC 17TH @ 10:00AM

Items to Include: Gas powered Air compressor, Greenlee Pipe bender, Gas Powered Concrete Cutting Machine , Greenlee Tabletop pipe bender, Gas Jumping Jack tamp , 1-1/2inch EMT connectors, and Fittings, 6-foot aluminum cross arms, Misc. florescent high-pressure sodium metal halide and incandescent lps & bulbs, Misc. Cadweld Molds, Misc. straps I hole and 2-hole 1/2 inch to 4- inch (rigid and EMT), Misc. LB's-X and T's conduit bodies from 1/2-inch to 4-Inch , Misc. Electrical Boxes and Covers, Liquid tight connectors 1/2 inch to 4-inch, PVC pipe 4 inch and fittings, concrete forms for duct bank, 5-inch LB conduit bodies, Vermeer trench Tamp, Misc. Job site boxes, Misc. Liquid tight 1/2 inch 4 inches, Plotter for plans copy machine, Grinders and Welders, Plat tamp, 4-inch aluminum pipe 400 foot, 4-inch multicell PVC, 24-inch DIP Pipe and Fittings, Ditch witch Pipe Pusher, Misc. wooden poles 20 ft - 50 ft and Galvanized poles (pole bases), GMC Brigadier telelect with a 50 ft boom, Flatbed trailer extended 70ft, Ford 700 dump bed with a crash cushion, Office trailer with AC 21ft X 9ft, Pump house top, Band saw, Drill press, Vibratory dirt hog 2 Inch -6-inch, Greenlee punch, Misc. troughs and boxes 3x and 4x , Pole trailer 70ft, Misc. Breakers 2000 amp and down, Masco field lighting-poles, fixtures, and ballast, Misc. conduit fittings 1/2 inch to 4-inch, Misc. manual Pipe benders, GMC 2500 HD Truck, Misc. Fuses from 2000 amp down, 6-inch Rigid Pipe, Barge 40 foot with motor (Johnson) , Seeder goes on the back of a tractor, White gas stove, Doors and Windows, Rebar and More...



CONDUCTED BY BRADLEY'S

Auction

Auctioneer WM. THOMAS BRADLEY

NCAL 5443, SCAL4521, VAL 2907004408

P.O. Box 983
SALEMBURG N.C. 28385
919-201-7530
EMAIL GUARDMUT@AOL.COM
VISIT OUR WEBSITE AT:
WWW.BRADLEYSAUCTIONS.COM



Inventory Reduction Auction

BY "KING ELECTRIC"
 135 SOUTH RACEPATH RD FAYETTEVILLE NC 28301
 TUESDAY DEC 17TH @ 10:00AM



10% BUYERS B/F WILL APPLY - CONCESSIONS WILL BE AVAILABLE

P.O. BOX 983 - SALEMBURG, NC 28385

919-201-7530 EMAIL GUARDMUT@AOL.COM

VISIT OUR WEBSITE AT: WWW.BRADLEYSAUCTIONS.COM

Terms of Sale: We accept Visa, Master Card, Discover, American Express, Cash or Approved Check. ANNOUNCEMENTS DAY OF SALE TAKE PRECEDENCE OVER ANY PRINTED MATERIAL. Terms and Conditions: Cash, Travelers Checks or Good Checks if known to us, otherwise letter of credit from bank. Positive identification required. All items sold as is with any announcement made the day of sale taking PRECEDENCE over any printed material. NOT RESPONSIBLE FOR THEFT OR ACCIDENTS. Auctioneer is not responsible for accuracy of any description or condition of any item sold. All State & Federal Firearms Regulation's Apply. Rain or shine! NCAL 5443, SCAL4521, VAL 2907004408

CONDUCTED
BY
BRADLEY'S

Auction

Auctioneer WM. THOMAS BRADLEY

NCAL 5443, SCAL4521, VAL 2907004408

FOR MORE INFO
WWW.BRADLEYS AUCTIONS.COM

OR CALL 919-201-7530.

CALL BRADLEY'S TO
 BOOK YOUR AUCTION TODAY!

WE ACCEPT