

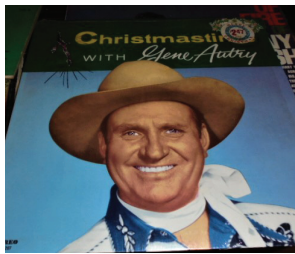
# Estate Auction

P/P MR. & MRS. GEORGE SMITH "LIVING"  
4080 COVERED BRIDGE ROAD • CLAYTON NC 27527

SAT. JUNE 4<sup>TH</sup> @ 10:00AM

**EVERYONE IS INVITED TO JOIN US FOR A GREAT AUCTION!!!**

**REMEMBER TO CALL BRADLEY'S AUCTIONS FOR YOUR AUCTION NEEDS!!**



10% B/F APPLIES • CALL BRADLEY'S TO BOOK YOUR AUCTION TODAY! (919) 201-7530 RAIN OR SHINE!

P.O. BOX 983 - SALEMBURG, NC 28385

919-201-7530 EMAIL [GUARDMUT@AOL.COM](mailto:GUARDMUT@AOL.COM)

VISIT OUR WEBSITE AT: [WWW.BRADLEYSAUCTIONS.COM](http://WWW.BRADLEYSAUCTIONS.COM)

Terms of Sale: We accept Visa, Master Card, Discover, American Express, Cash or Approved Check. ANNOUNCEMENTS DAY OF SALE TAKE PRECEDENCE OVER ANY PRINTED MATERIAL. Terms and Conditions: Cash, Travelers Checks or Good Checks if known to us, otherwise letter of credit from bank. Positive identification required. All items sold as is with any announcement made the day of sale taking PRECEDENCE over any printed material. NOT RESPONSIBLE FOR THEFT OR ACCIDENTS. Auctioneer is not responsible for accuracy of any description or condition of any item sold. All State & Federal Firearms Regulation's Apply. Rain or shine!  
NCAL 5443, SCAL4521, VAL 2907004408

CONDUCTED  
BY  
BRADLEY'S

# Auction

Auctioneer WM. THOMAS BRADLEY  
NCAL 5443, SCAL4521, VAL 2907004408

FOR MORE INFO  
[WWW.BRADLEYSAUCTIONS.COM](http://WWW.BRADLEYSAUCTIONS.COM)

OR CALL 919-201-7530.

WATCH FOR UPDATES!

RAIN OR SHINE!





# Estate Auction

P/P MR. & MRS. GEORGE SMITH "LIVING"  
4080 COVERED BRIDGE ROAD • CLAYTON NC 27527

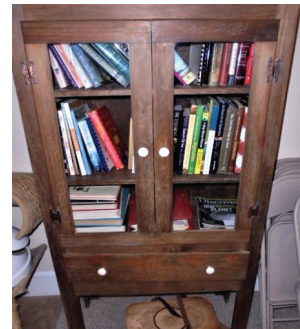
### Directions:

From NC 42 E go approx. 1 2/10 miles, turn Left onto Amelia Church Rd, go approx. 1 4/10 miles, turn Left onto Shotwell Rd, go approx. 1 8/10 miles, turn Right onto Covered Bridge Rd, go approx. 4/10 miles to sale site **Watch for Auction Signs!**

**SAT. JUNE 4<sup>TH</sup> @ 10:00AM**

**\*NOTE: WE DO NOT CHARGE UP FRONT MONEY TO CONDUCT YOUR AUCTION.**

Items to Include: Nice Arrowhead collection, Assortment of old Silver coins, Nice Chevy crew cab truck with matching camper top "one owner", Long tractor, 2 J/D riding mowers, Push mowers, Ball jar collection, Depression glass collection, 2 Trailers, Vintage Pine State sign from Mr. Smith's dad's country store, Several firearms, Assortment of furniture  
Plus who knows what else we will find!



CONDUCTED  
BY  
BRADLEY'S

# Auction

Auctioneer WM. THOMAS BRADLEY  
NCAL 5443, SCAL 4521, VAL 2907004408

P.O. BOX 983  
SALEMBURG N.C. 28385  
919-201-7530

EMAIL [GUARDMUT@AOL.COM](mailto:GUARDMUT@AOL.COM)  
VISIT OUR WEBSITE AT:  
[WWW.BRADLEYSAUCTIONS.COM](http://WWW.BRADLEYSAUCTIONS.COM)