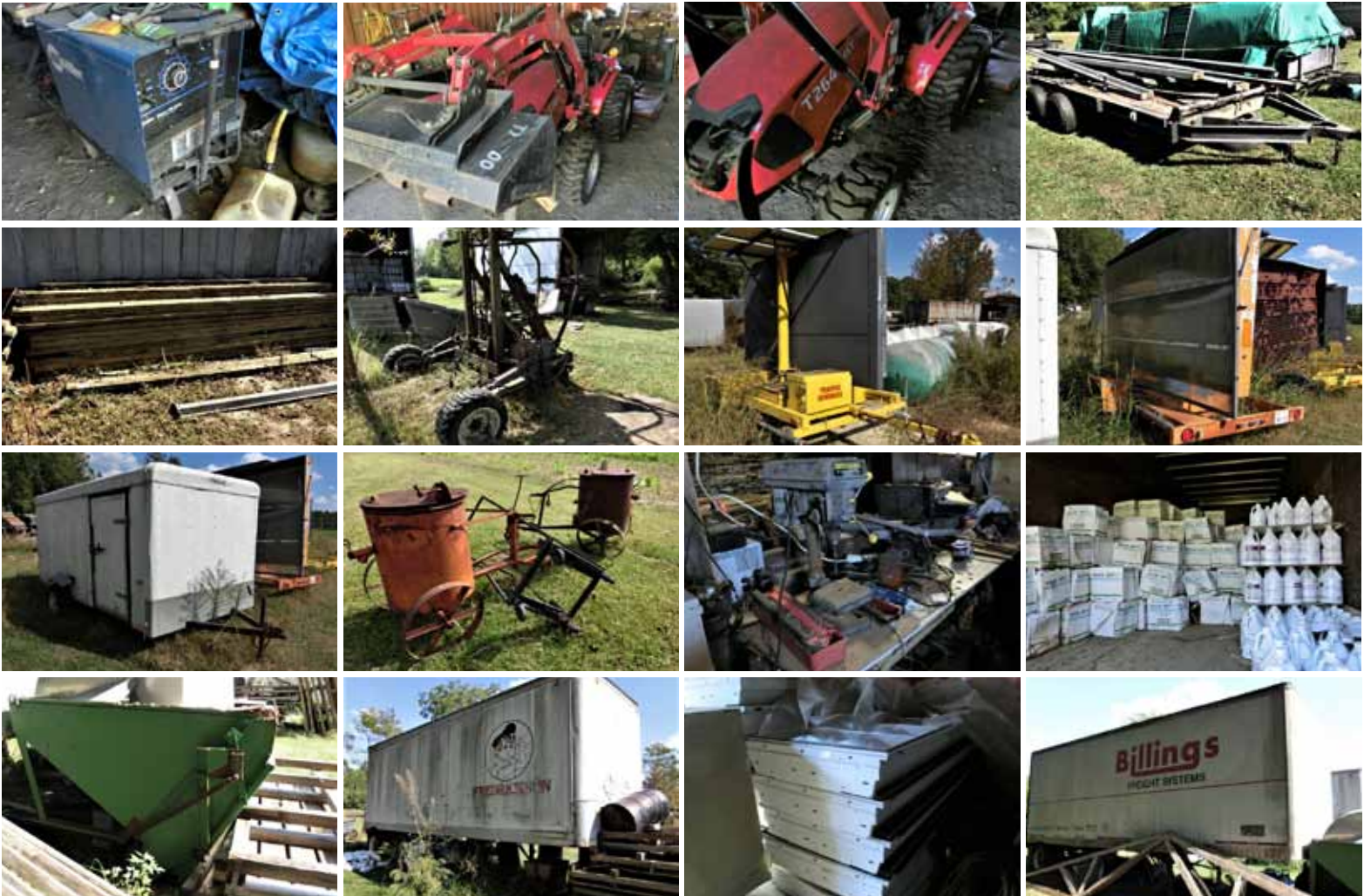


# Absolute Estate Auction "Deceased"

P/P OF THE LATE ROYAL WHALEY  
273 DEVON TEW RD • ROSEBORO NC 28382  
SAT. NOVEMBER 26<sup>TH</sup> @ 10:00AM

**EVERYONE IS INVITED TO JOIN US FOR A GREAT AUCTION!!!**

**REMEMBER TO CALL BRADLEY'S AUCTIONS FOR YOUR AUCTION NEEDS!!**



10% B/F APPLIES • CALL BRADLEY'S TO BOOK YOUR AUCTION TODAY! (919) 201-7530 RAIN OR SHINE!

P.O. BOX 983 - SALEMBURG, NC 28385  
919-201-7530 EMAIL [GUARDMUT@AOL.COM](mailto:GUARDMUT@AOL.COM)

**VISIT OUR WEBSITE AT: [WWW.BRADLEYSAUCTIONS.COM](http://WWW.BRADLEYSAUCTIONS.COM)**

Terms of Sale: We accept Visa, Master Card, Discover, American Express, Cash or Approved Check. ANNOUNCEMENTS DAY OF SALE TAKE PRECEDENCE OVER ANY PRINTED MATERIAL. Terms and Conditions: Cash, Travelers Checks or Good Checks if known to us, otherwise letter of credit from bank. Positive identification required. All items sold as is with any announcement made the day of sale taking PRECEDENCE over any printed material. NOT RESPONSIBLE FOR THEFT OR ACCIDENTS. Auctioneer is not responsible for accuracy of any description or condition of any item sold. All State & Federal Firearms Regulation's Apply. Rain or shine!  
NCAL 5443, SCAL4521, VAL 2907004408

CONDUCTED  
BY  
BRADLEY'S

# Auction

Auctioneer WM. THOMAS BRADLEY  
NCAL 5443, SCAL4521, VAL 2907004408

**FOR MORE INFO**  
**[WWW.BRADLEYSAUCTIONS.COM](http://WWW.BRADLEYSAUCTIONS.COM)**  
**OR CALL 919-201-7530.**  
**WATCH FOR UPDATES!**  
**RAIN OR SHINE!**



# Absolute Estate Auction "Deceased"

P/P OF THE LATE ROYAL WHALEY

273 DEVON TEW RD • ROSEBORO NC 28382

**Directions:** From Roseboro take Hwy 24 East, turn Right onto Boren Brick Rd "Barnhill asphalt plant", go approx. 1 1/10 miles, turn Right onto Devon Tew Rd "Dead end rd.", go approx. 3/10 miles and the sale site will be on your Right. **Watch for Auction Signs!**

**SAT. NOVEMBER 26<sup>TH</sup> @ 10:00AM**

**\*NOTE: WE DO NOT CHARGE UP FRONT MONEY TO CONDUCT YOUR AUCTION.**

Items to Include: All terrain forklift, Several trailers, Enclose trailer, Concrete steps, Tools, Cases of face masks, Small tractor/trailer package, Barn to be moved with 2 Containers, 2 Old bulk barns, Weldon air compressors, Computers, 2 Semi pub trailers Plus who knows what else we will find???

**ATTENTION:** MISS LINDA JOHNSON ADMINISTRATOR OF THIS ESTATE WILL BE TAKING OFFERS ON THIS REAL ESTATE WHICH INCLUDES THE FARMHOUSE AND APPROX. 12 ACRES FOR MORE INFO CALL 1-864-523-3685 OFFER EXPIRES DECEMBER 15TH



CONDUCTED  
BY  
BRADLEY'S

# Auction

Auctioneer WM. THOMAS BRADLEY  
NCAL 5443, SCAL 4521, VAL 2907004408

P.O. BOX 983  
SALEMBURG N.C. 28385  
919-201-7530

EMAIL [GUARDMUT@AOL.COM](mailto:GUARDMUT@AOL.COM)  
VISIT OUR WEBSITE AT:  
[WWW.BRADLEYSAUCTIONS.COM](http://WWW.BRADLEYSAUCTIONS.COM)