

PUBLIC AUCTION

VALUABLE CHESTER CO. REAL ESTATE

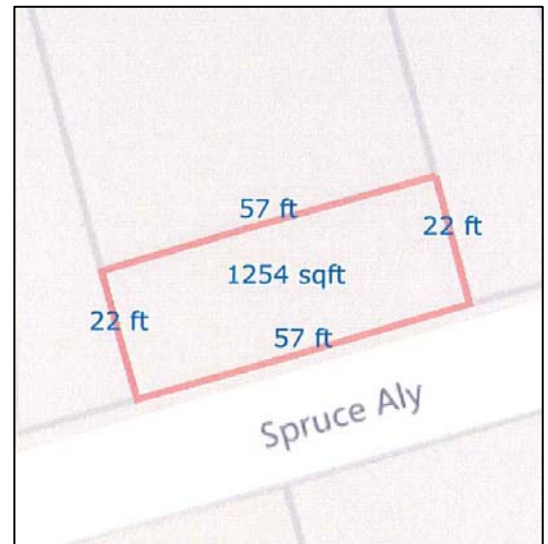
20'x56' 3 Bay Steel Building

on a .03+/- Acre Lot

Ideal for Vehicle Storage

Wednesday, June 21, 2017 · 6:00^{pm}

LOCATED: On the 700 block of Spruce Alley between
2nd & 3rd Avenue, Parkesburg PA 19365



★ REAL ESTATE ★

Real estate consists of a 20'x56' steel building with three 7'x9' overhead doors, walk-in door, and 100 amp electric service. Partial concrete floor. Total 2016 taxes: \$139.00.

OPEN FOR INSPECTIONS: Thursday, June 8, 2017 · 4-6 PM

TERMS: \$5,000.00 Down at Auction. Balance by July 31, 2017.

Buyer pays all Realty Transfer Taxes.

FOR: Estate of Ethel M. Constable



Barr/Davis Auctioneers, LLC

P.O. Box 7, Gap PA 17527

(717) 442-9221

(610) 384-8433

www.barrdavis.com

Announcements Day of Auction Take Precedence Over Previous Advertising