

# PUBLIC AUCTION

**VALUABLE LANCASTER COUNTY REAL ESTATE**

**Sand Mine Rd & Paes Rd, New Holland PA 17557**

*Salisbury Township, Pequea Valley Schools*

**★2 Large Adjoining Building Lots★**

**4.722<sup>+/-</sup> Acres & 3.148<sup>+/-</sup> Acres**

**To Be Offered Separately**

*Any Builder · Current Standard Perc Test*

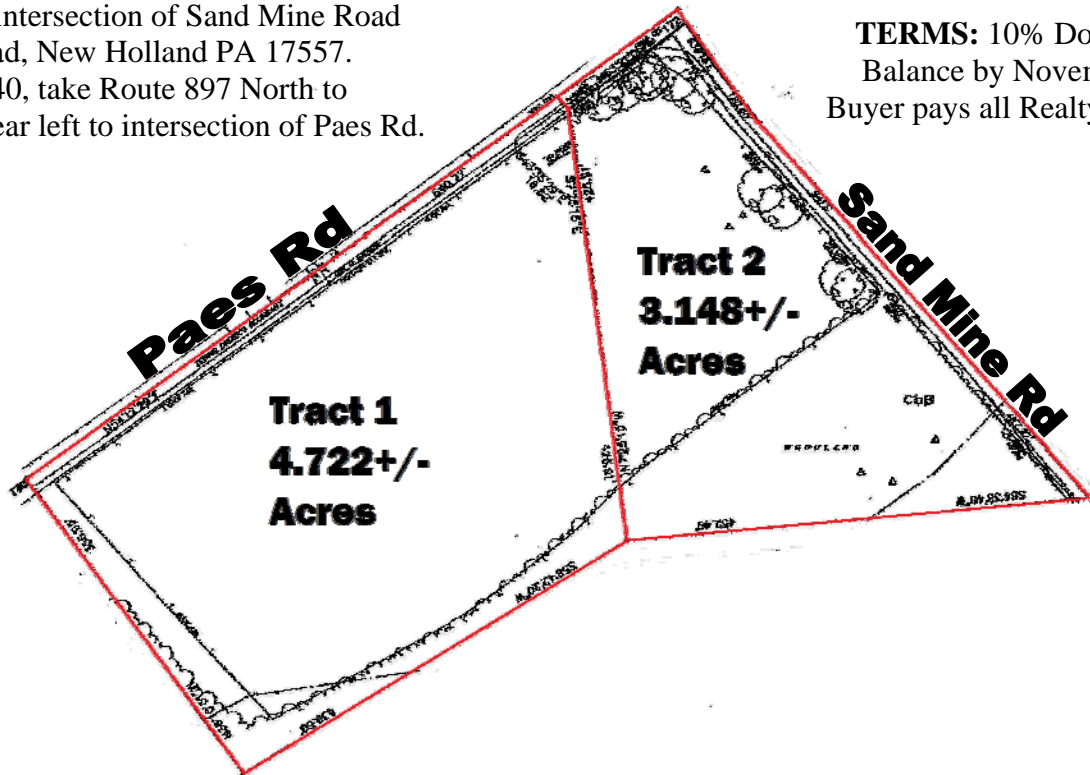
*Zoned OS – Open Space*

**Thursday, September 28, 2017 · 6:00<sup>pm</sup>**

**★REAL ESTATE★**

Located at the intersection of Sand Mine Road  
& Paes Road, New Holland PA 17557.  
From Rt 340, take Route 897 North to  
Sandmine Rd, Bear left to intersection of Paes Rd.

**TERMS:** 10% Down at Auction.  
Balance by November 10, 2017.  
Buyer pays all Realty Transfer Taxes.



**BARR  
DAVIS**  
AUCTIONEERS, LLC  
AY-002084

Barr/Davis Auctioneers, LLC  
P.O. Box 7, Gap PA 17527  
(717) 442-9221  
(610) 384-8433  
[www.barrdavis.com](http://www.barrdavis.com)

For: Salisbury Township  
Announcements Day of Auction Take  
Precedence Over Previous Advertising